

CL:AIRE Annual Conference

hosted by and in conjunction
with the Geological Society, London

SUSTAINABLE LAND MANAGEMENT

Decision support frameworks and tools for the
sustainable development of land

Session 1 - SuRF UK (Sustainable Remediation Forum)

Overview of SuRF-UK Framework

Dr Richard Boyle, Homes & Communities Agency
Steering Group: Sustainable Remediation Forum-UK
(SuRF-UK)

26th September 2013

CL:AIRE 'Sustainable Land Management', London

CONTAMINATED LAND: APPLICATIONS IN REAL ENVIRONMENTS

What is SuRF-UK?

- UK-based collaboration of regulators, industry, academics and consultants.
- Established in 2007, following the lead of SURF (in the US).
- Independent co-ordination by CL:AIRE (www.claire.co.uk/surfuk).
- Secretariat has been funded by HCA, National Grid and Shell with in-kind support from industry.
- Focus on holistic sustainability assessment of soil and groundwater remediation

Why SuRF-UK?

- Cross-sector backing in the UK
 - Need something aligned to current regimes and not expensive to use
 - Industry (SAGTA)
 - Good practice, business ethics, sustainable procurement, CSR
 - A way to enable communication and facilitate transparency with all parties
- Regulatory
 - Appropriate and reasonable solutions
 - Soil Framework Directive (draft); Water Framework Directive
 - Planning
 - (Changes to Part 2A)
- Also response to worldwide interest:
 - EU (NICOLE, SuRF-UK, SuRF-NL, EURODEMO+)
 - USA (e.g. SuRF, US EPA “green remediation”, ASTM)
 - Canada, Australia, etc

SuRF-UK So Far

Before SuRF-UK

- 1999/2000: EA R&D on land and GW cost benefit assessment
- 2004: CLR11 talks about sustainable remedial actions
- 2006: SuRF established in USA
- Concepts recognised, but not widely applied

SuRF-UK Phase 1

- 2007: SuRF-UK established
- 2009: Review of SD indicators for CL projects use published
- 2010: SuRF-UK Framework published

SuRF-UK Phase 2

- 2011: 'Annex 1' SuRF-UK Indicator Categories refined
- 2011: Bardos *et al.* paper on sustainable remediation
- Case study development
- >50 conference Presentations

SuRF-UK Phase 3

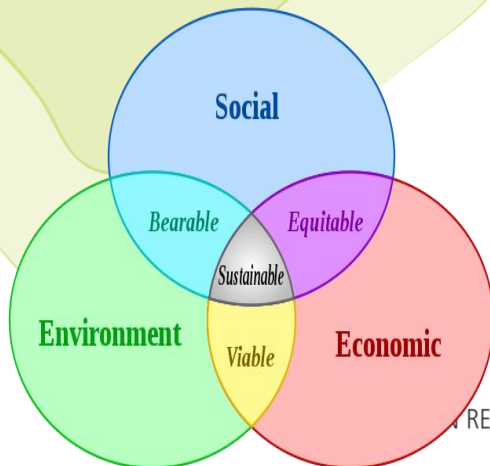
- 2013: Phase 3

Life changes:

- Part 2A Statutory Guidance;
- EA Guiding Principles;
- EA GP3;
- NPPF;
- ASTM Standard;
- ISO Standard

SuRF-UK Definition

- ‘the practice of demonstrating, in terms of **environmental**, **economic** and **social** indicators, that the benefit of undertaking remediation is greater than its impact and that the **optimum** remediation solution is selected through the use of a **balanced** decision-making process’



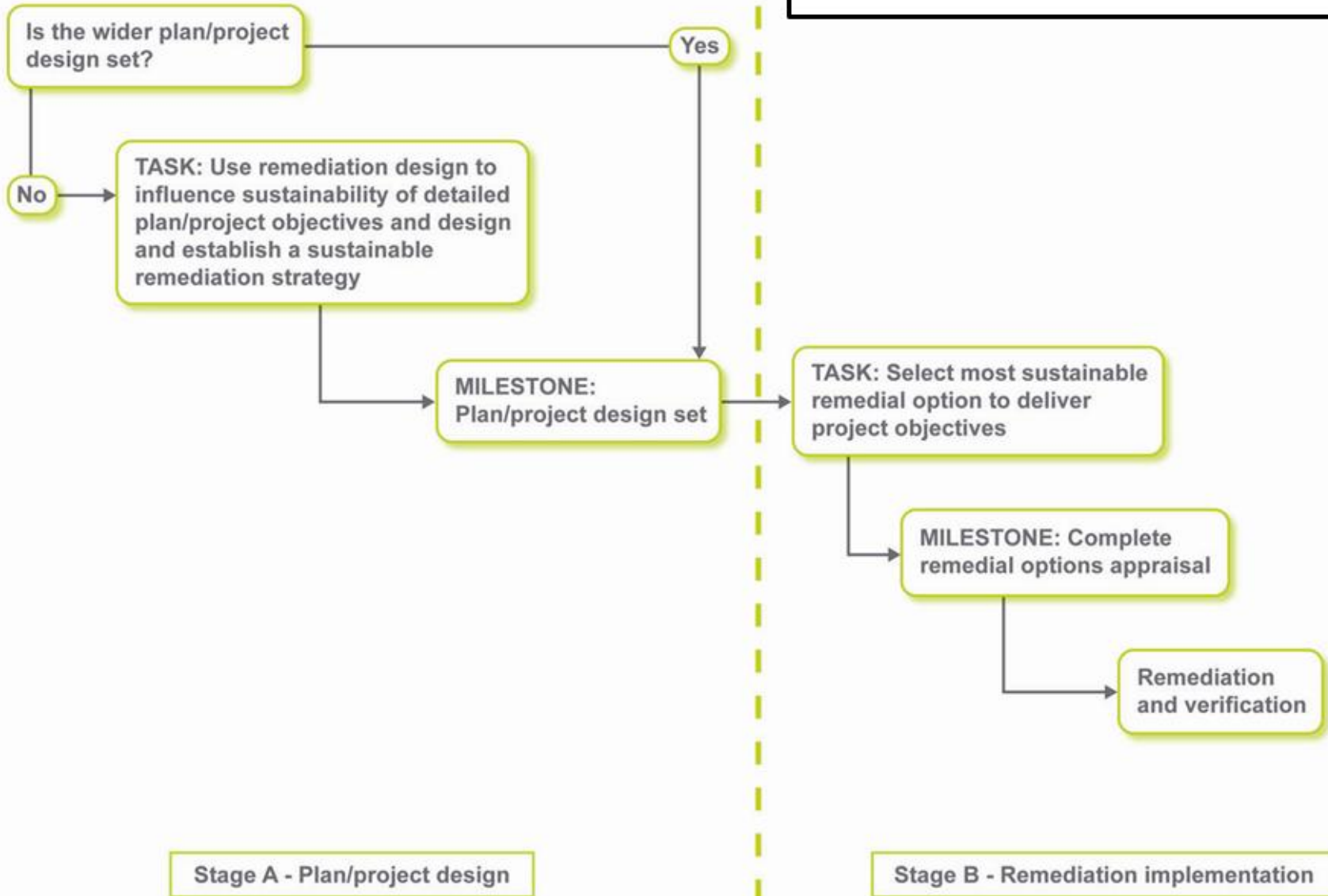
‘Development that meets the needs of the present without compromising the ability of future generations to meet their own needs’ (1987, Brundtland)

IN REAL ENVIRONMENTS

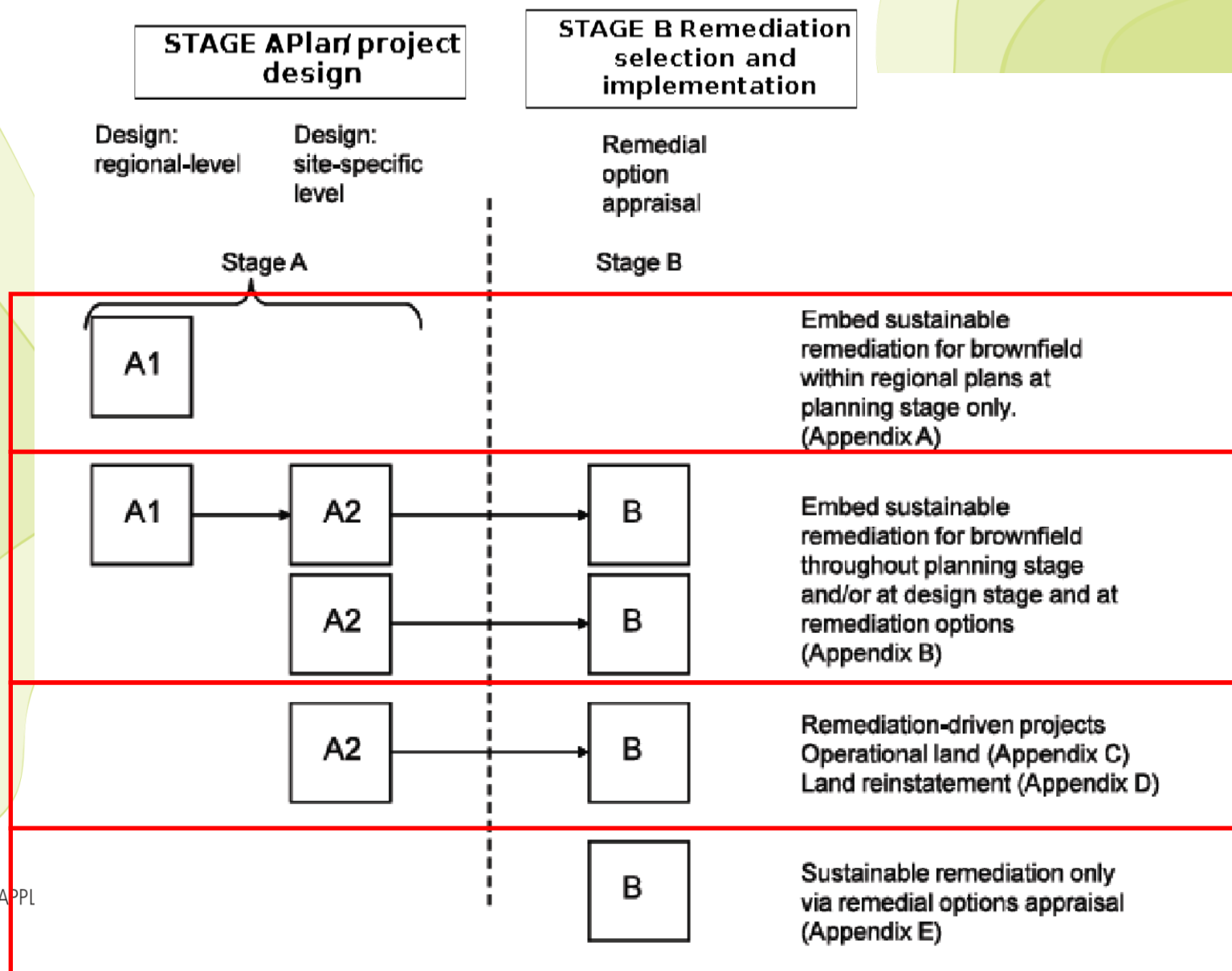
SuRF-UK Framework Key Principles

- Optimise risk-management based on consideration of social, environmental and economic factors, but always ensure:
 - **Principle 1:** Protection of human health and the wider environment
 - **Principle 2:** Safe working practices
 - **Principle 3:** Consistent, clear and reproducible evidence-based decision-making
 - **Principle 4:** Record keeping and transparent reporting.
 - **Principle 5:** Good governance and stakeholder involvement
 - **Principle 6:** Sound science and evidence base

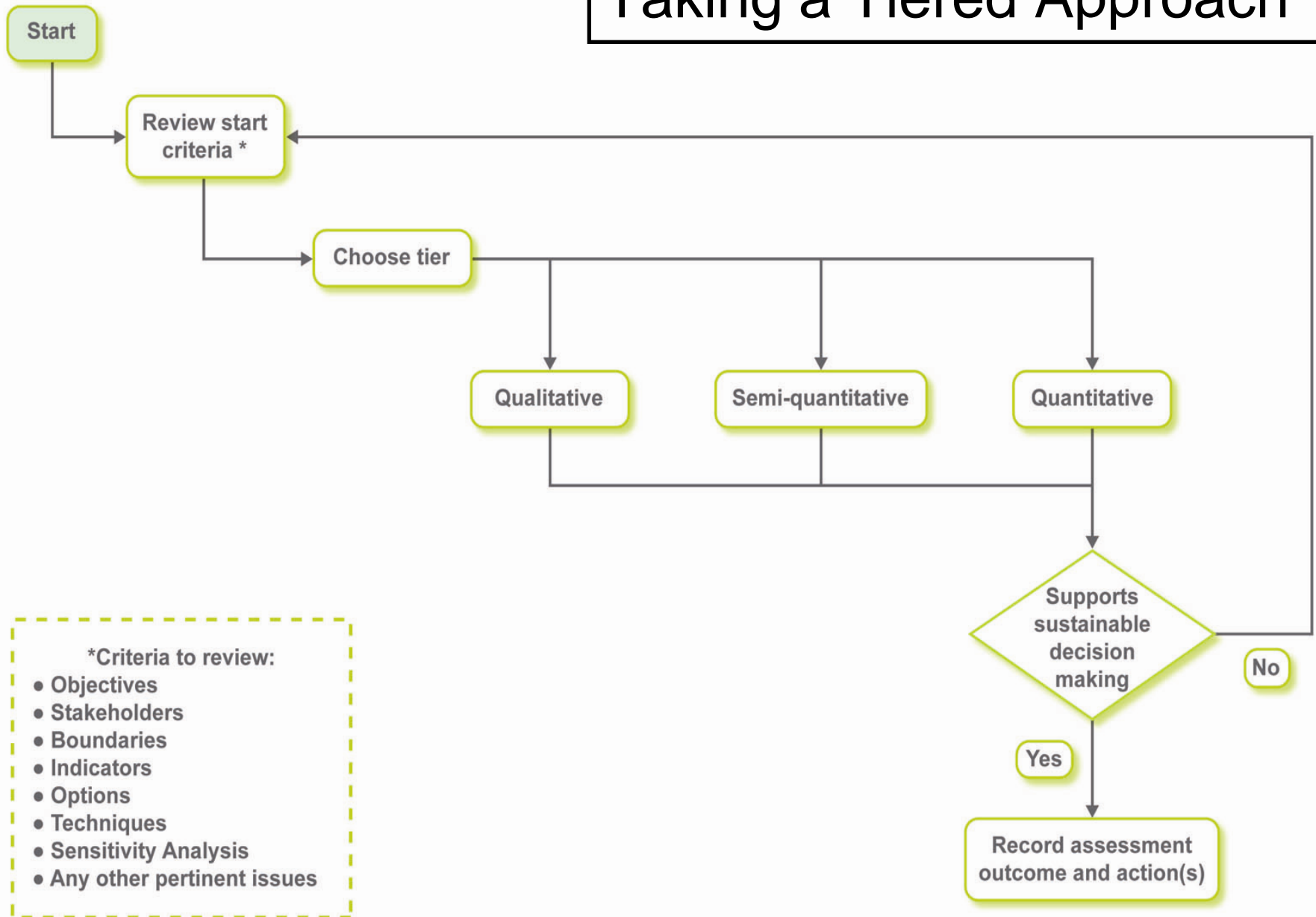
SuRF-UK framework



Using the SuRF-UK Framework



Taking a Tiered Approach



SuRF-UK Indicators

Environment	Social	Economic
ENV 1: Air	SOC 1: Human health and safety	ECON 1: Direct economic costs and benefits
ENV 2: Soil and ground conditions	SOC 2: Ethics and equality	ECON 2: Indirect economic costs and benefits
ENV 3: Groundwater and surface water	SOC 3: Neighbourhoods and locality	ECON 3: Employment and employment capital
ENV 4: Ecology	SOC 4: Communities and community involvement	ECON 4: Induced economic costs and benefits
ENV 5: Natural resources and waste	SOC 5: Uncertainty and evidence	ECON 5: Project lifespan and flexibility

CONTAMINATED LAND: APPLICATIONS IN REAL ENVIRONMENTS

CL:AIRE

Thank you.
Any questions?

