



Arsenic in the South West

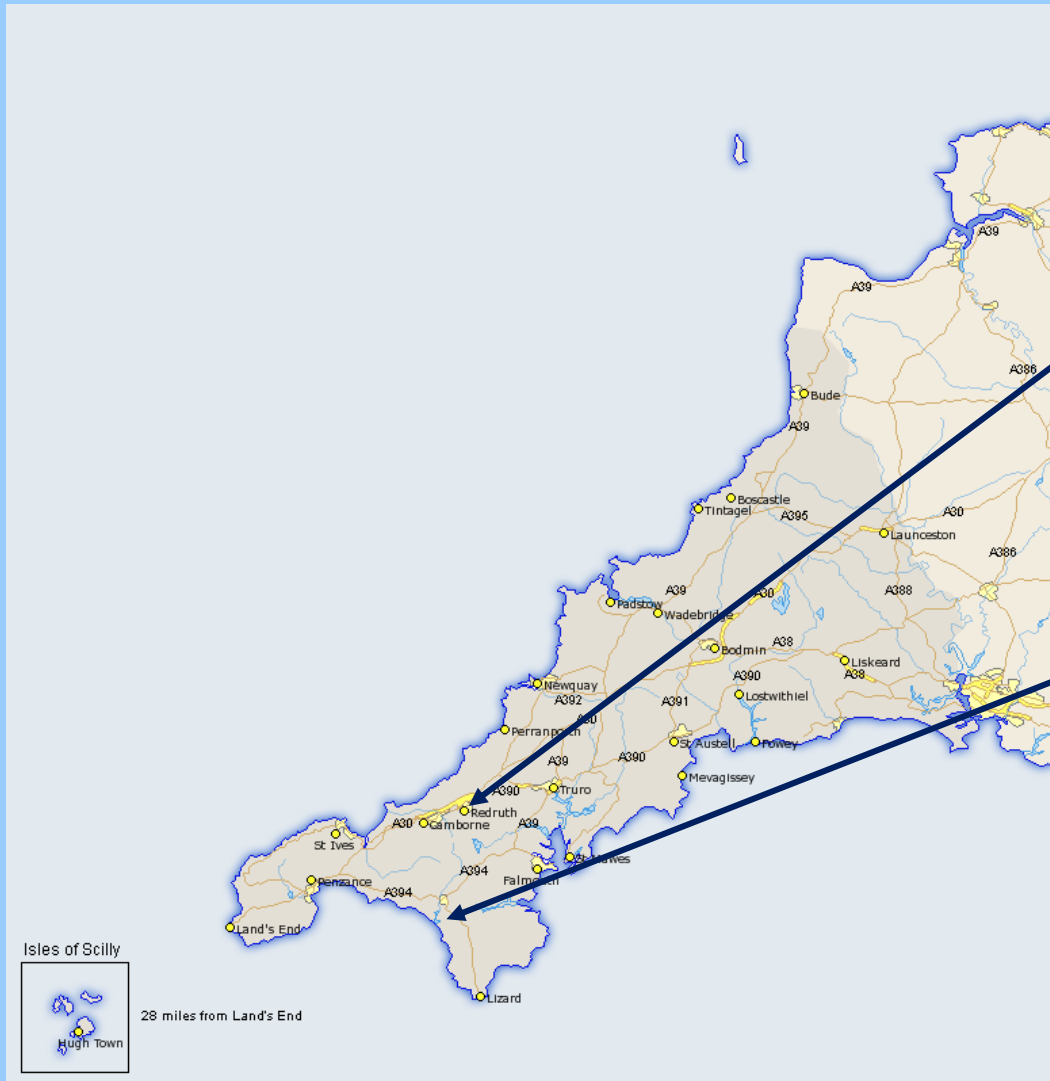
Case Studies

by

Rod Smith (John Grimes Partnership)

Tel: 01752 690533 ♦ post@johngrimes.co.uk ♦ www.johngrimes.co.uk

Case Studies



**Case Study 1 - Sandy Lane,
Redruth, Cornwall**

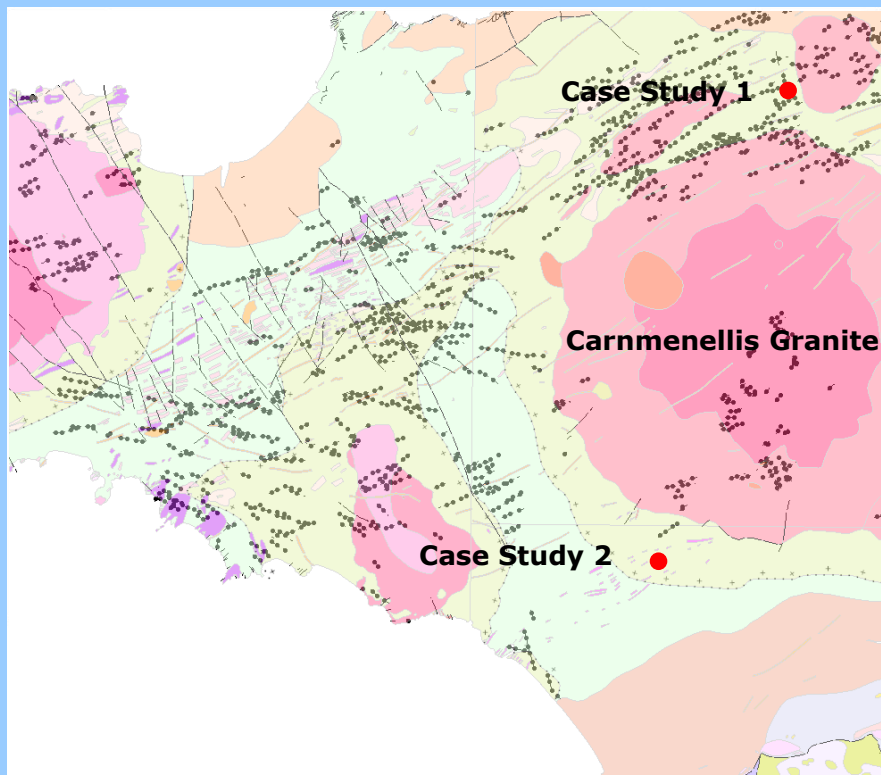
Case Study 2 - Helston Urban Extension

Geology Framework of the South West



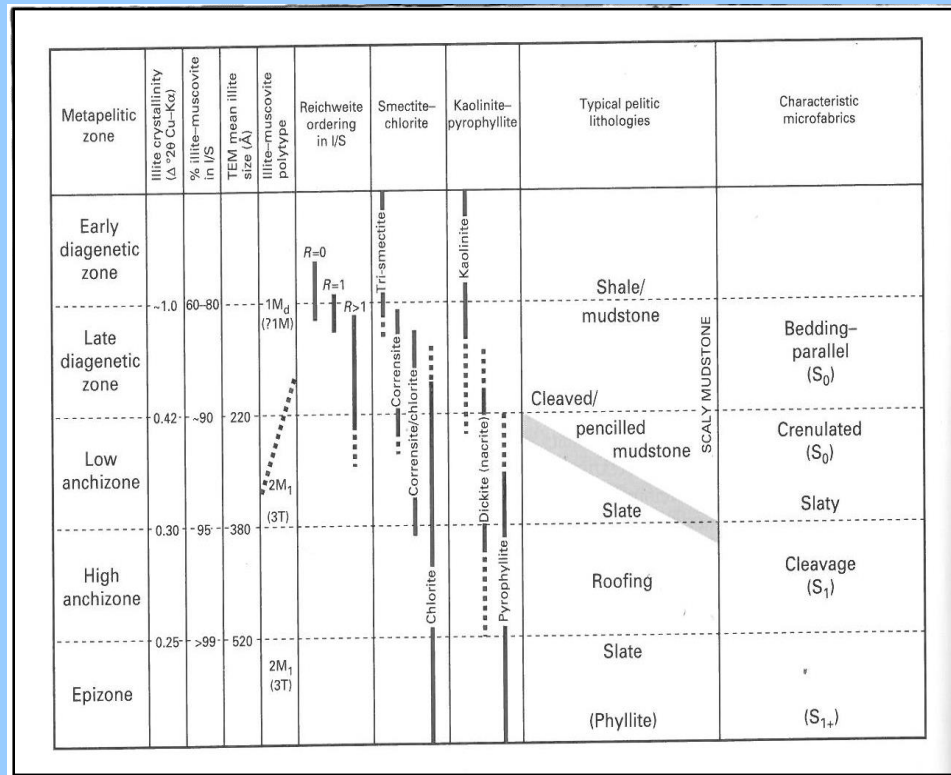
Basin Divisions

(from Leveridge and Hartley 2004)



Metamorphic Map of South West

(from Warr 1991)

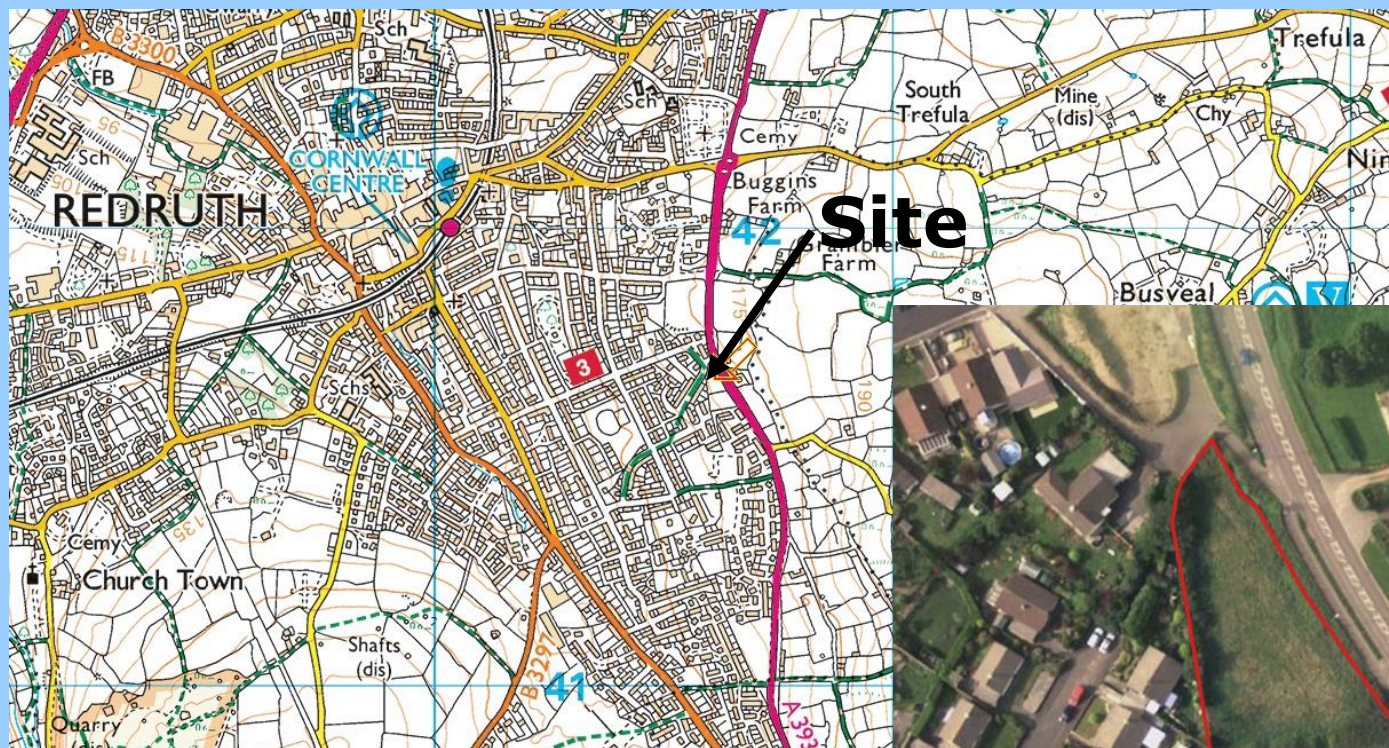


Case Study 1 - Sandy Lane, Redruth, Cornwall



JGP

**JOHN GRIMES
PARTNERSHIP**



- 0.35ha
- Proposed residential development with gardens
- Geology: Mylor Slate Formation

Case Study 2 - Helston Urban Extension, Helston, Cornwall



JGP

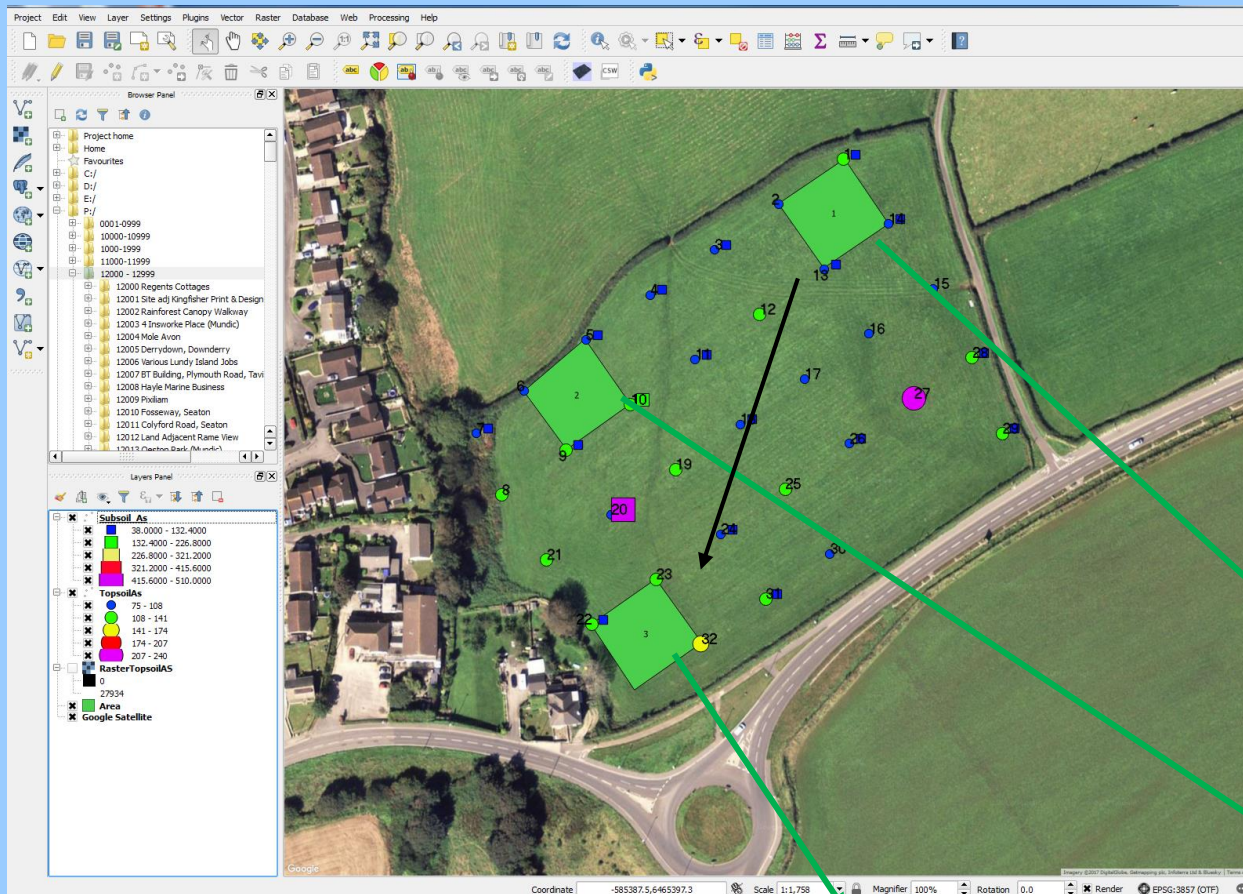
**JOHN GRIMES
PARTNERSHIP**



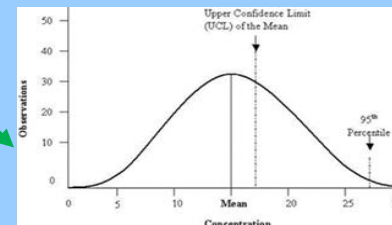
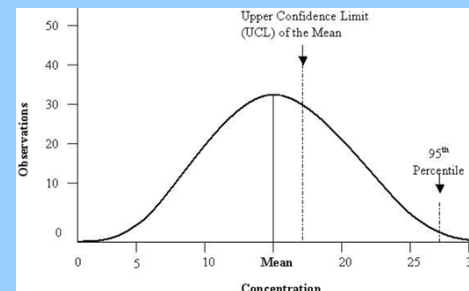
- 2.67 ha
- Proposed mixed development including residential with gardens
- Geology – Mylor Slate Formation



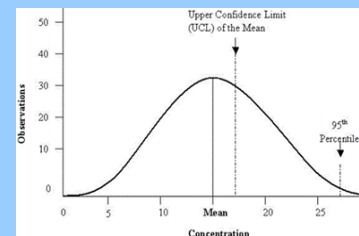
Sampling Strategy – Example 2 - Helston Urban Village



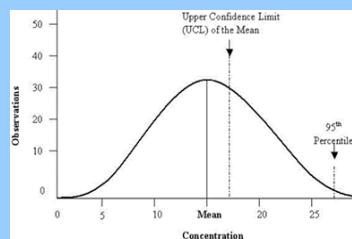
**UCL95 For the site as a
whole – 120mg/kg**



UCL95 - 103mg/kg



UCL95 - 128mg/kg



UCL95 - 140mg/kg

CL:AIRE (2008), Guidance on Comparing Soil
Contamination Data with a Critical Concentration

Global Spatial Autocorrelation



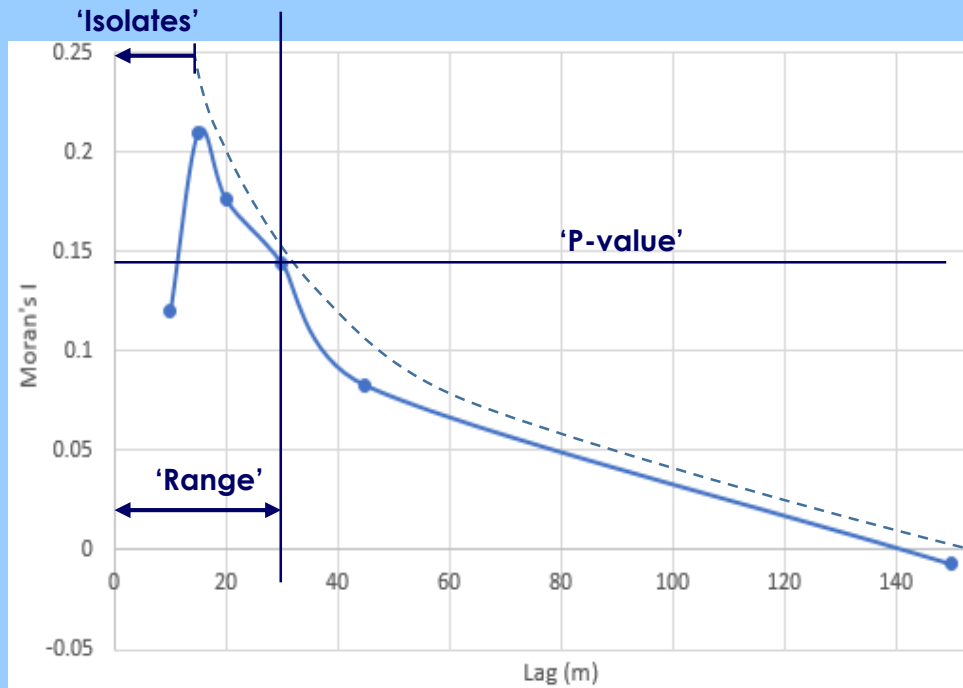
JGP

JOHN GRIMES
PARTNERSHIP

Tobler's Law – “Everything is related to everything else, but near things are more related than distant things”

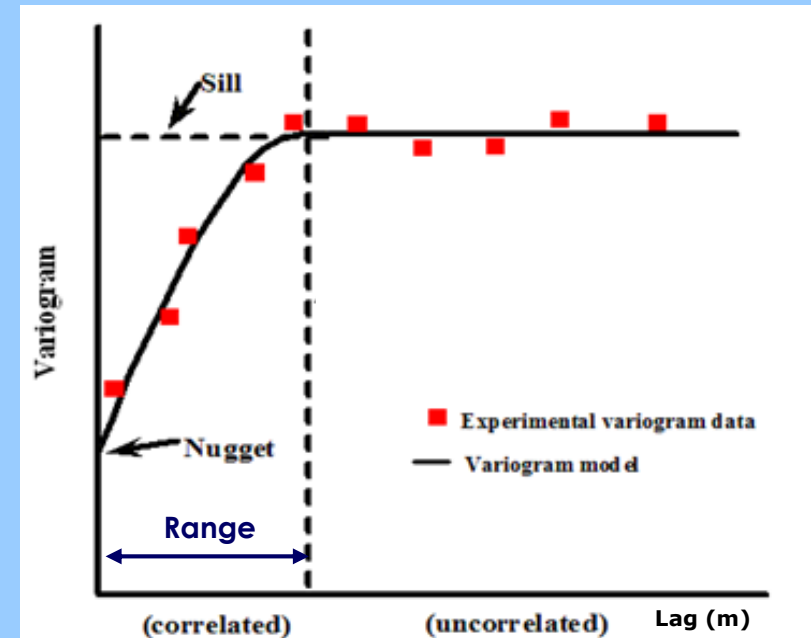
Moran's I Method

Case Study 2 – Helston Urban Extension



Variogram Method

Case Study 1 – Sandy Lane, Redruth



Local Indicators of Spatial Autocorrelation (LISA)

Sampling Strategy – Sandy Lane



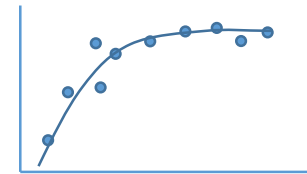
JGP

**JOHN GRIMES
PARTNERSHIP**



Site Sampling

Experimental Variogram



Model Variogram

A kriged contour surface
incorporating a prescribed
level of uncertainty

Risk Assessment



Exposure Model – CLEA Model

Generic Assessment Criteria:

- Soil Guideline Values (SGV)
- Category 3 Screening Levels (C4SL)
- Suitable 4 Use Levels (S4UL)

Detailed Quantitative Risk Assessment

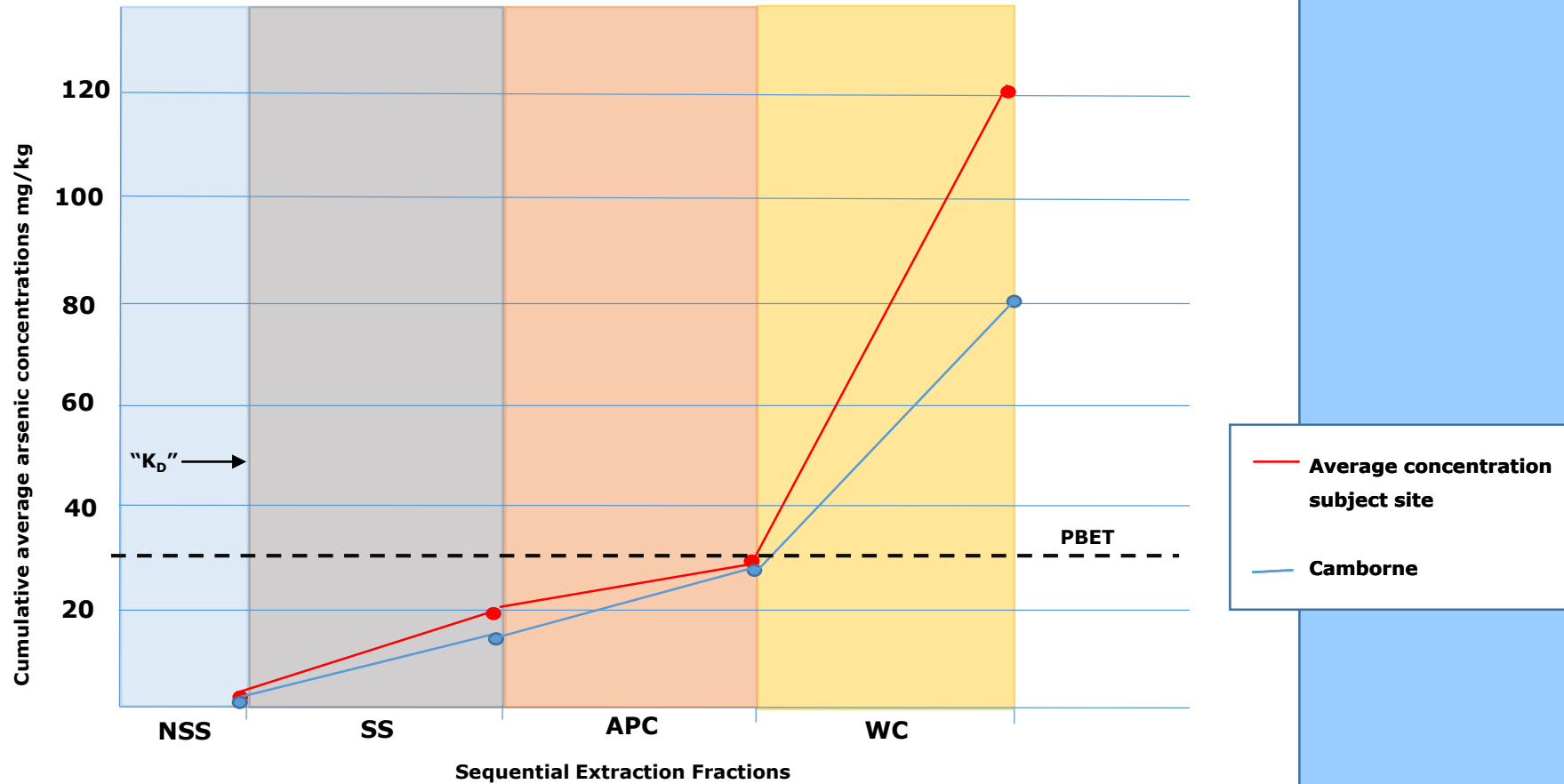
- PBET →
 - Soil : Plant Concentration Factor (CF)
- Ruby *et al* Method
 - Ruby Modified Fernandez
 - Unified Barge Method

Sequential Extraction



Comparison of Sequential Extraction Results Using Wenzel et al (2001)

Case Study 2 – Helston Urban Development





JGP

**JOHN GRIMES
PARTNERSHIP**

Case Study 2 - Helston Urban Village – Summary of default CF's and CFs derived from regional studies

Produce Type	Default CF recommended by EA in SR2 (2009) [Geometric mean] dry weight/dry weight	Measured CF [Geometric Mean] (Xu & Thornton, 1985) dry weight/dry weight	Measured CF (Warren et al. 2003) dry weight/dry weight	Measured CF (JGP) dry weight/dry weight	Measured CF (AFS Agency *) dry weight/dry weight
Green vegetables	0.00479	0.00312 (lettuce)	Not measured	Not measured	-
Root vegetables	0.00388	0.00065 (carrot)	Not measured	Not measured	-
Tuber vegetables	0.00120	Not measured	0.00015 (potato)	0.00017 (potato)	0.00029 (potato)
Herbaceous fruit	0.00345	Not measured	Not measured	Not measured	-
Shrub fruit	0.00120	Not measured	Not measured	Not measured	-
Tree fruit	0.00701	Not measured	Not measured	Not measured	-
Cabbage	-	-	-	-	0.00017

* Meharg et al (2013) Arsenic Speciation and localization in horticultural produce grown in a historically impacted mining region

**JGP****JOHN GRIMES
PARTNERSHIP**

Sandy Lane, Redruth (Subsoil Summary)

UCL95	109mg/kg
MAV	134mg/kg
SSAC	199mg/kg

Helston Urban Village – Topsoil Summary

UCL95	120mg/kg
MAV	140mg/kg
SSAC	149mg/kg

Sandy Lane Topsoil UCL95 – 320mg/kg



JGP

JOHN GRIMES
PARTNERSHIP

Thank You

Questions?

John Grimes Partnership Ltd., Leonards Road, Ivybridge, Devon, PL21 0RU

Tel: 01752 690533 ♦ post@johngrimes.co.uk ♦ www.johngrimes.co.uk